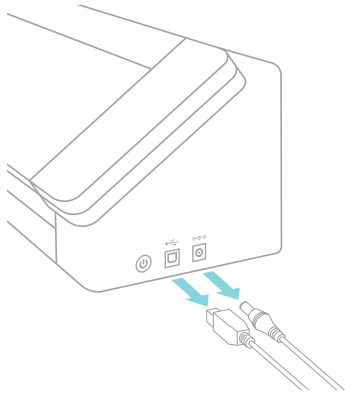
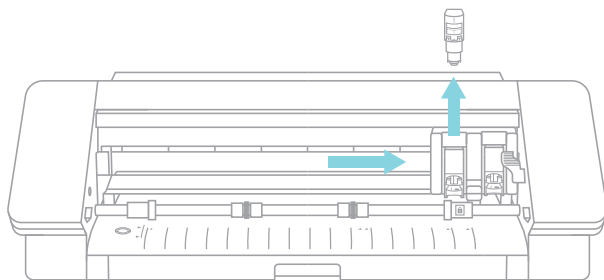


Preparing to Replace the Cutting Strip

1. Disconnect the power cable and the USB cable from the machine.



2. Open the cover and remove the blade or tool from the carriage.
3. Move the carriage all the way over to the right-hand side of the machine.



Removing the Old Cutting Strip

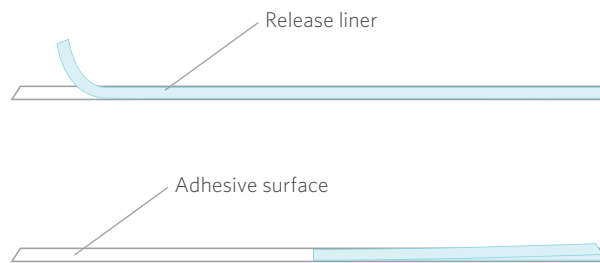
4. Peel off the clear plastic layer from the current cutting strip on your machine and remove the entire yellow adhesive layer.



5. Use rubbing alcohol or other adhesive remover on a cotton swab or paper towel to wipe off any residual adhesive or debris from the cutting strip area.

Applying the New Cutting Strip

6. Peel back approximately half of the release liner of the new cutting strip and fold it over to the other half of the release liner, as shown in the illustration.



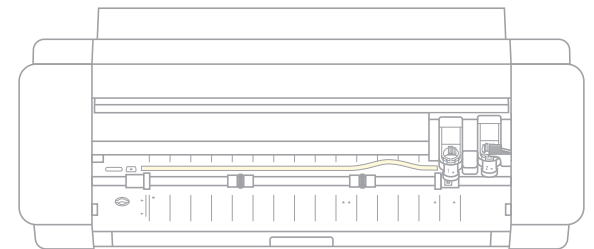
7. Adhere the cutting strip starting from the left side of the machine (adhesive side down) along the front edge of the groove. Make sure to leave a small gap between the cutting strip and the left edge of the groove.

Caution

When adhering the cutting strip, make sure that it lays completely flat and straight so that it fits entirely within the groove. A cutting strip that is uneven or curved may cause incomplete cuts or other malfunctions.

In addition, be very careful when applying your cutting strip. A mistake that needs to be fixed by a subsequent reapplication may cause bumps in the cutting strip to appear.

8. Pass the right end of the cutting strip underneath the carriage and then move the carriage to the left-hand side of the machine.



Caution

Take care that the cutting strip and release liner do not get caught up in the carriage.

9. Peel off the remaining release liner and then adhere the rest of the cutting strip in the groove. Ensure that the cutting strip is applied so that it continues to lay flat and straight.